

Play Idea # 1

Mandatory Play

Use Municipal Signage To Re-Program Our Neighborhood
To Let Loose



MANDATORY PLAY

Miju Kang
Yumi Park

Directional signage is a road or street sign generally used to give information about location, driving instruction or expected municipal behavior.

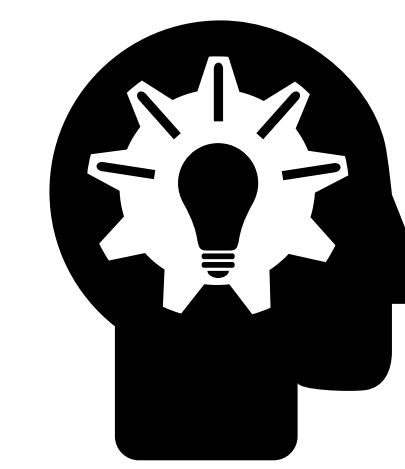
They carry an authority about them giving shape and order to daily life in a community. Their font, color and iconography are often taken for granted as the visual language of authority.

This project borrows this visual language of authority, but replaces the content with new imperatives for humor and play.

RE-PROGRAM OUR NEIGHBORHOOD FOR PLAY

NEIGHBOR/ GAP/ BRIDGE

This project was funded in part through a generous donation from the William Randolph Hearst Foundations and produced through the Otis College Creative Action class Neighbor/Gap/Bridge.



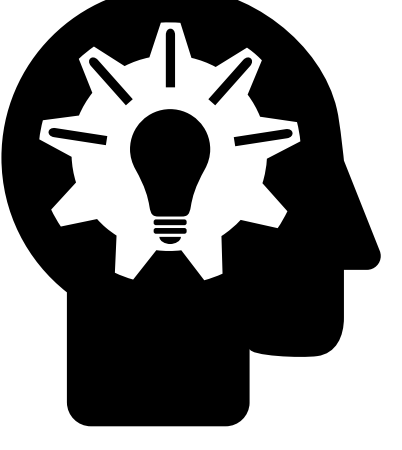
OTIS
Otis College of Art and Design

Play Idea # 2

Juicetron 2050

Future Focused Mobile Beverage Cart Invites Park Goers To "Play With Their Food" In A Collective + Sustainable Approach

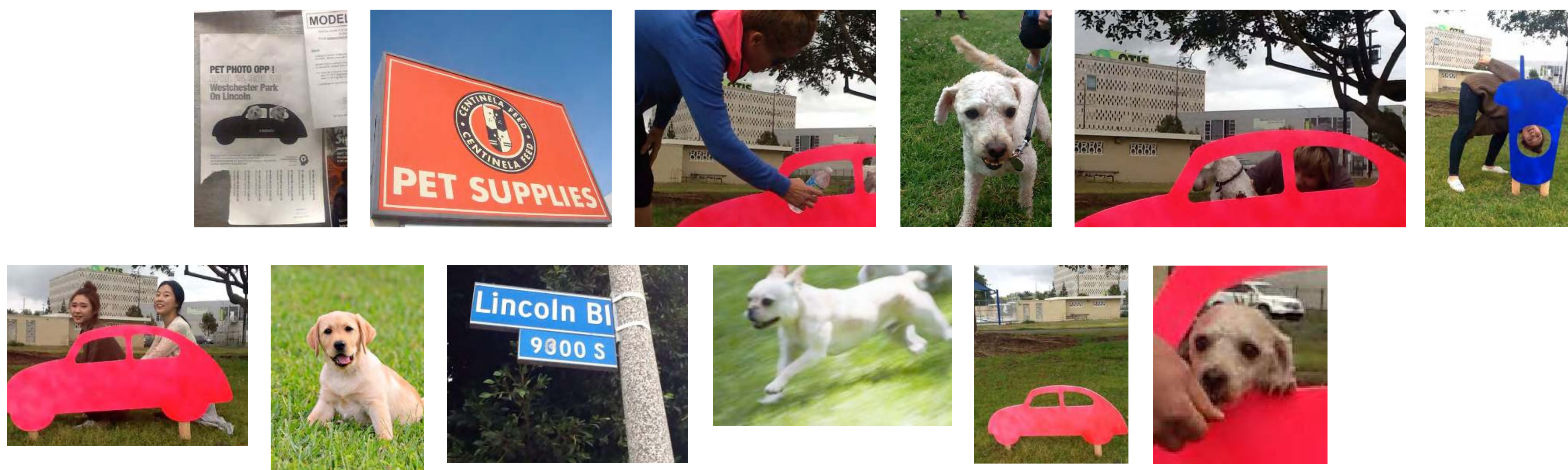
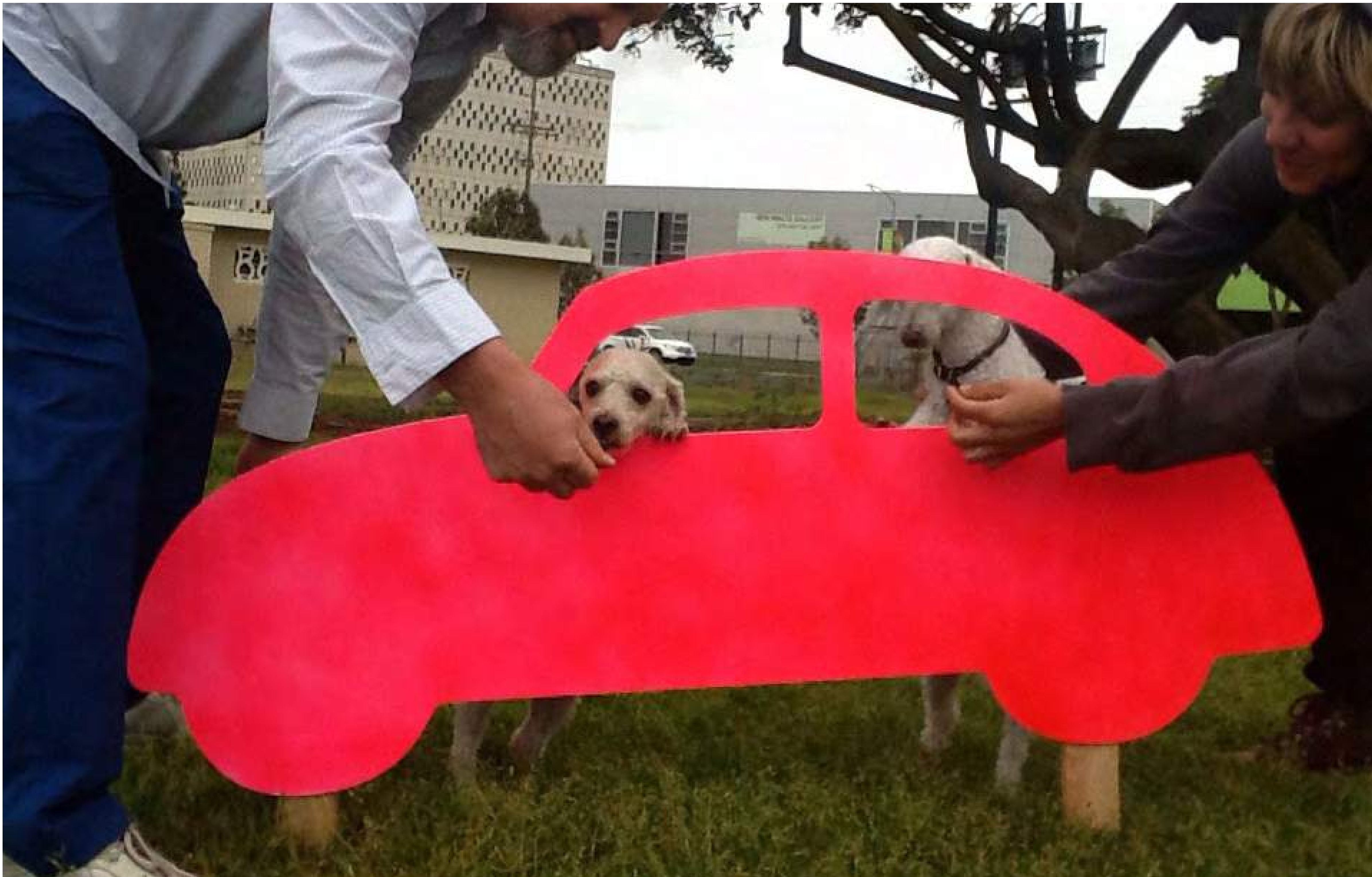


<p>JUICETRON 2050</p> <p>Mohammad Chowdhury Patricia Kovic</p>	<p>After years of California droughts, park goers get creative. Grass out / Orchards in. Limited ocean de-salinated water feeds orchards of oranges, lemons limes, figs, plums and almonds. Backpacks with fruit suction equipment for "harvesting" invite everyone to engage and "play with their food" – contributing to the "crowd sourced" collection container in the Juicetron Mobile Beverage Cart.</p> <p>Nutritious mixed juice drinks vary by seasonal harvest + suction team members. Free mixed juice to anyone who "Plays."</p>	<p>RE-PROGRAM OUR NEIGHBORHOOD FOR PLAY</p> <p>NEIGHBOR/ GAP/ BRIDGE</p> <p><small>This project was funded in part through a generous donation from the William Randolph Hearst Foundations and produced through the Otis College Creative Action class Neighbor/Gap/Bridge.</small></p>	 <p>OTIS <small>Otis College of Art and Design</small></p>
---	--	---	--

Play Idea # 3

Pop-up Pet Photo booths

Pets Become "Social Bridges" Inviting Neighbors To Meet And Become Acquainted



PET PHOTO BOOTHS

Yimei Guo
Haowen An

This project explores dogs and their impact on placemaking. Pop-up pet photo events increase participation in the park, and add to community activity and vitality.

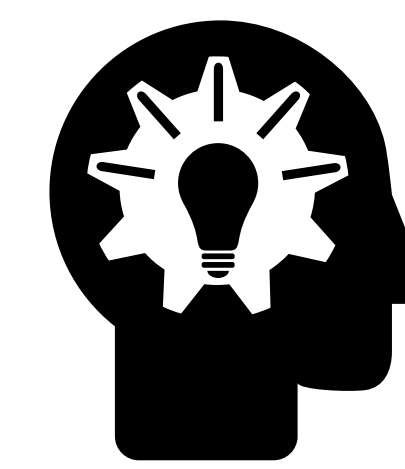
Using dogs as "Social Bridges" helps mediate gaps in community connection – inviting neighbors to meet and become acquainted when they otherwise might not have.

Ravi, Lucky, Bear, Bentley, Max and Toby: Smile say "Ruff."

RE-PROGRAM OUR NEIGHBORHOOD FOR PLAY

NEIGHBOR/ GAP/ BRIDGE

This project was funded in part through a generous donation from the William Randolph Hearst Foundations and produced through the Otis College Creative Action class Neighbor/Gap/Bridge.



OTIS
Otis College of Art and Design

Play Idea # 4

Re-Charge

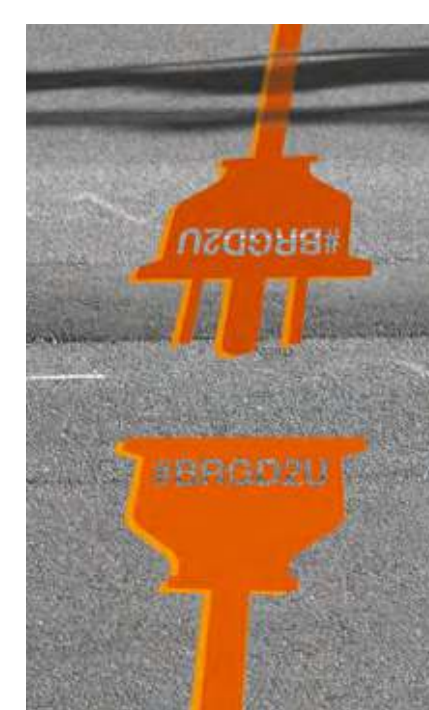
Sharing Community Resources Builds Social Capital + Brings New Energy To A Neighborhood



Lincoln Boulevard remains one of the largest "GAPS" in our community.



This wayfinding system invites new connection between Otis College and Westchester Park.



OTIS



Sharing Community resources is sustainable.



Sharing Community resources builds social capital.

RE-CHARGE

Amarilis Altamirano
Min Kim

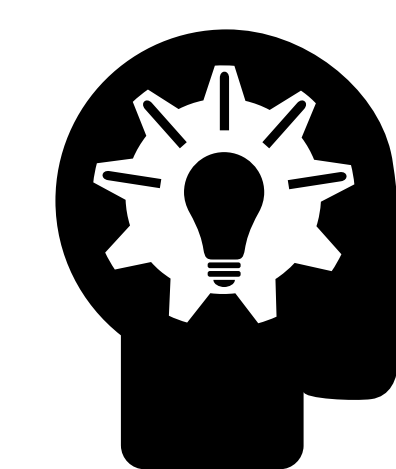
Lincoln Boulevard remains one of the largest "GAPS" in our community. This wayfinding system invites new connection between Otis College and Westchester Park. Sharing Community resources like park exercise equipment, walking paths, galleries and libraries is smart and sustainable.

Sharing community resources builds social capital and brings new energy to a neighborhood.

RE-PROGRAM OUR NEIGHBORHOOD FOR PLAY

NEIGHBOR/ GAP/ BRIDGE

This project was funded in part through a generous donation from the William Randolph Hearst Foundations and produced through the Otis College Creative Action class Neighbor/Gap/Bridge.

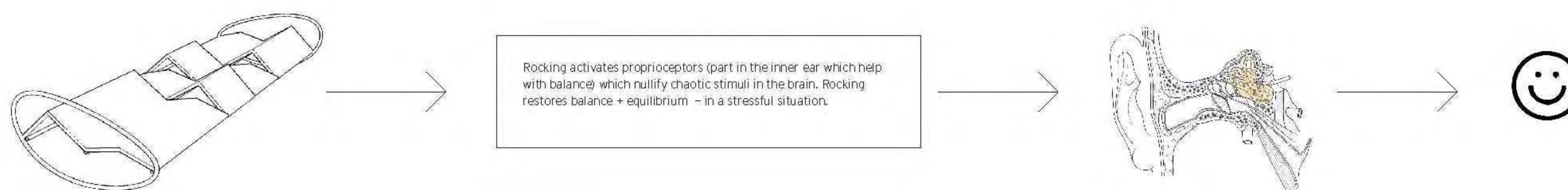
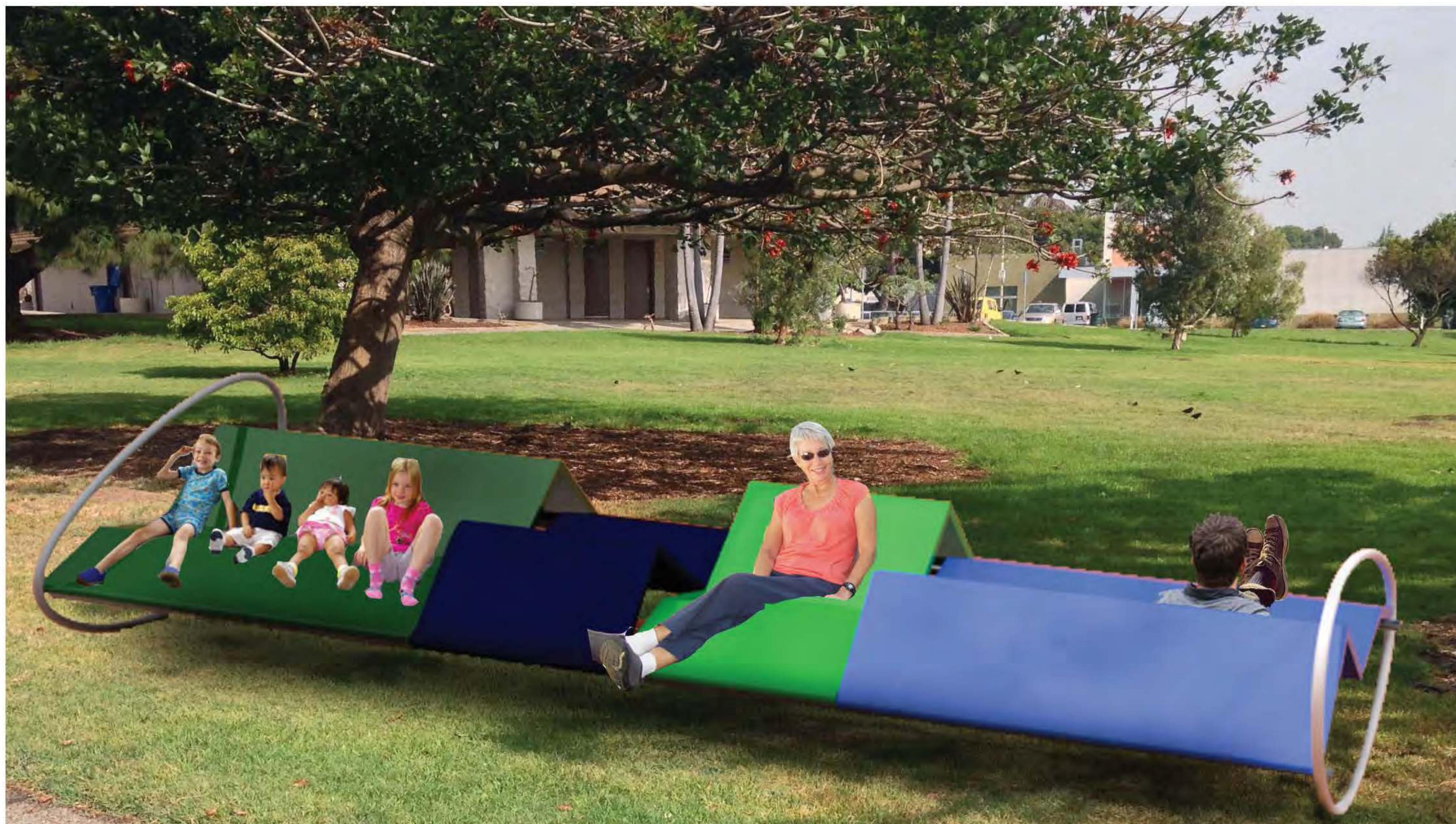



OTIS
Otis College of Art and Design

Play Idea # 5

Cradle To Cradle Seating

Public Seating Just Got Inclusive, Sustainable And Fun

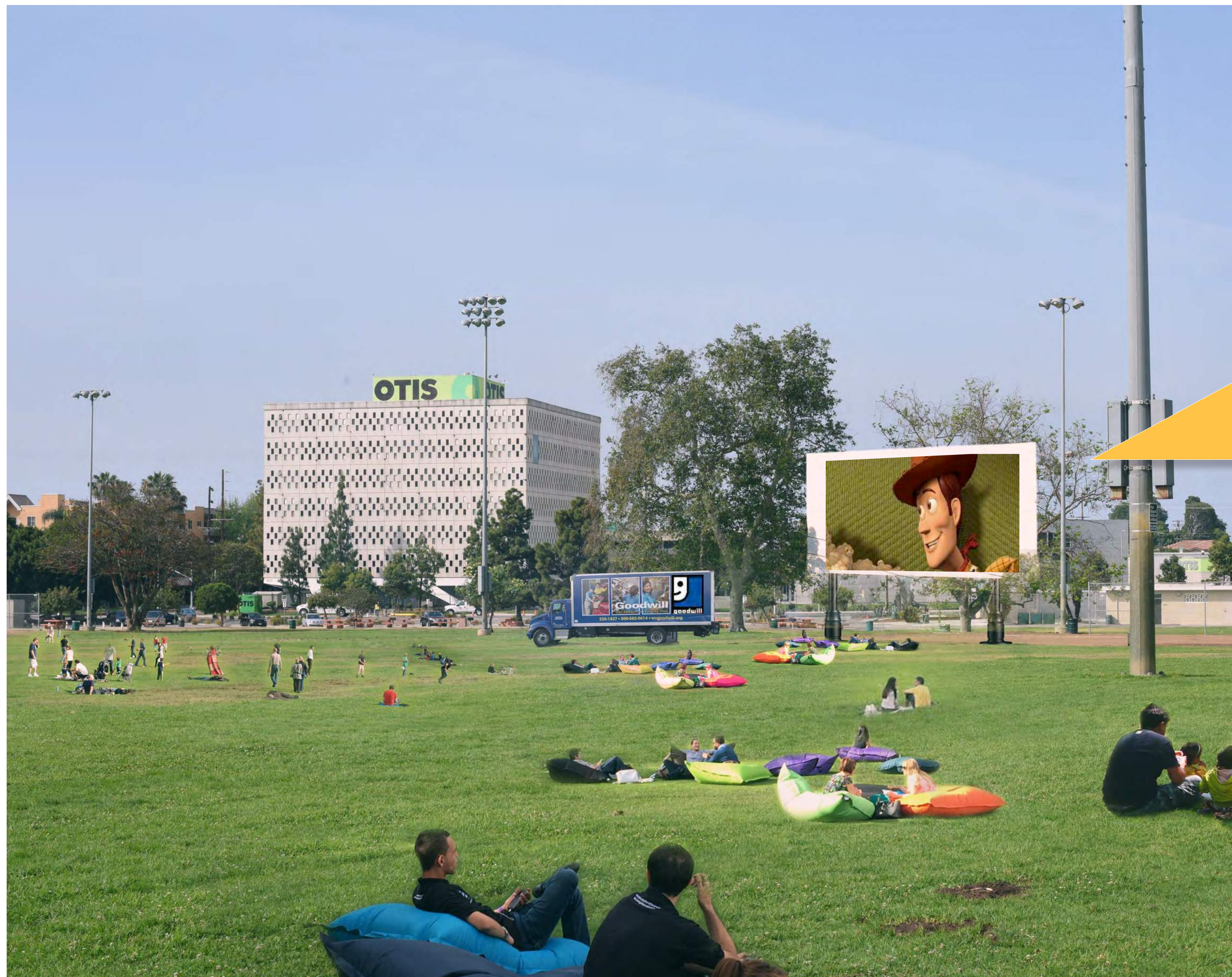


<p>CRADLE TO CRADLE SEATING</p> <p>Pedro Rolim Girao Joel Israel</p>	<p>Everyone enjoys rocking. It's a method of self-soothing for young children as well as older people. "Cradle to Cradle Seating" introduces new thought: What if rocking were for everyone?</p> <p>What if it was a multi-generational shared activity – in a municipal park setting – inviting neighbors of all ages to play, soothe and sky watch together?</p> <p>Recycled Plastic, Aluminum</p>	<p>RE-PROGRAM OUR NEIGHBORHOOD FOR PLAY</p> <p>NEIGHBOR/ GAP/ BRIDGE</p> <p>This project was funded in part through a generous donation from the William Randolph Hearst Foundations and produced through the Otis College Creative Action class Neighbor/Gap/Bridge.</p>	 <p>OTIS Otis College of Art and Design</p>
---	--	--	---

Play Idea # 6

Chair(ity)

An Evening Of Comfort, Community, Entertainment And Giving



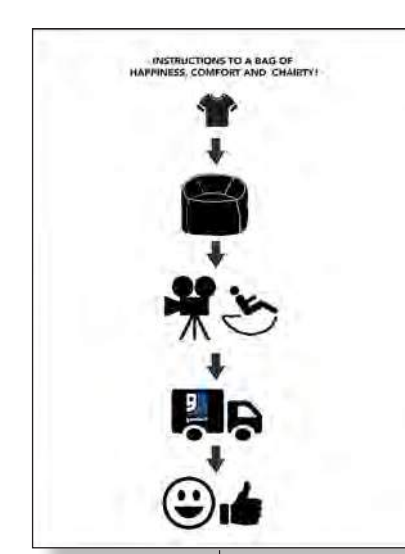
1



2



3



4



5



6



7



CHAIR(ITY)

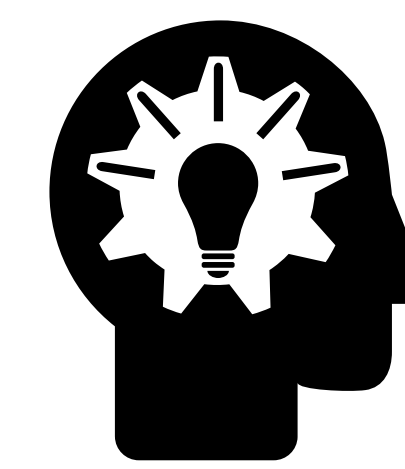
Wendy Wong
Handly Eugene
Jeanette Degollado
Patricia Kovic

- 1 Collect your gently worn clothing, and bedding.
- 2 Unzip this beanbag chair.
- 3 Place them inside.
- 4 Bring a filled beanbag chair to movie night in the park.
- 5 Sit on the chair and enjoy the movie with your neighbors.
- 6 Unpack your beanbag chair and put your donations in the Goodwill truck.
- 7 Feel joy.

RE-PROGRAM OUR NEIGHBORHOOD FOR PLAY

NEIGHBOR/ GAP/ BRIDGE

This project was funded in part through a generous donation from the William Randolph Hearst Foundations and produced through the Otis College Creative Action class Neighbor/Gap/Bridge.



OTIS
Otis College of Art and Design

Play Idea # 7

Boom ! Mic

Public Sculpture Becomes A Destination In Our Park Community
For Good Picnic Time With Great Music



Graphic Wayfinding System(Play Idea # 4) invites neighbors to the park, increasing usage.



Flat graphic application shifts to three dimensional sculpture . . .



. . . as pedestrians get closer to Boom ! Mic sculpture.

BOOM ! MIC

Min Kim
Amarilis Altamirano

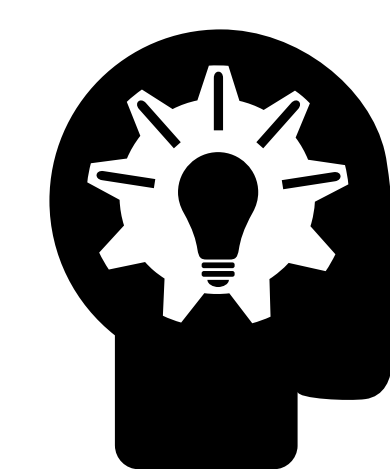
Boom ! Mic is inspired by artist Claes Oldenberg and his public art installations featuring oversized replicas of everyday objects. Picnics and barbeques are well attended in our park, but families and groups remain separated.

This project invites all neighbors to “step up to the mic” and share their “voice” by selecting music to enjoy with all picnic goers. Boom ! Mic works in tandem with Play Idea # 4 “RE-CHARGE” to increase pedestrian traffic to the park.

RE-PROGRAM OUR NEIGHBORHOOD FOR PLAY

NEIGHBOR/ GAP/ BRIDGE

This project was funded in part through a generous donation from the William Randolph Hearst Foundations and produced through the Otis College Creative Action class Neighbor/Gap/Bridge.



OTIS
Otis College of Art and Design

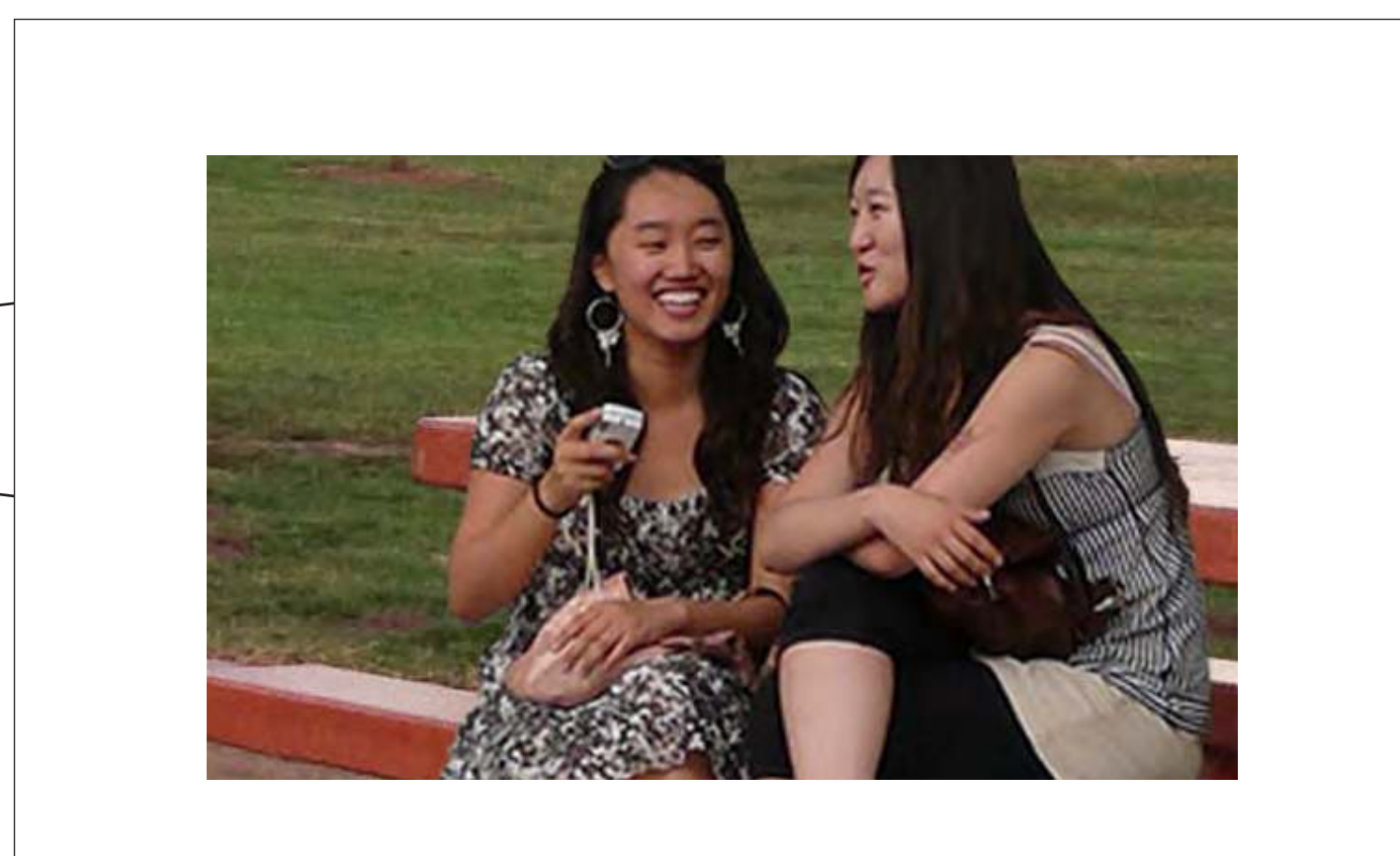
Play Idea # 8

Geopark Awning

Real-Life Events Documented Under Geopark Awnings
For Everyone To See And Enjoy



#brgd2u



GEOPARK AWNINGS

Tiffany Yi
Gregory Toothacre

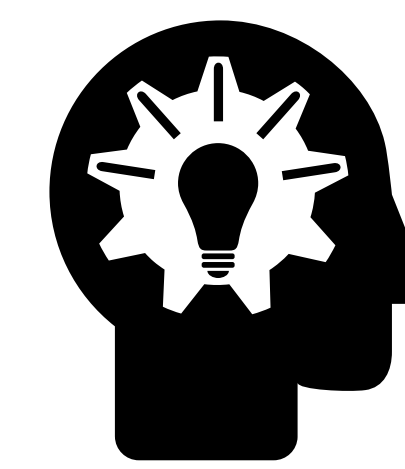
Geotagging is marking a video, photo or other media with a location. The tear shaped icon on Google maps is part of our daily digital diet. It's virtual, of course. But what if it had a physical counterpart, in a physical location? Geopark is a park awning under which real life events are documented and tagged #brgd2u for everyone to see and enjoy.

Seen from airplanes, our park looks intriguing. What's happening under those awnings? Find out: #brgd2u

RE-PROGRAM OUR NEIGHBORHOOD FOR PLAY

NEIGHBOR/ GAP/ BRIDGE

This project was funded in part through a generous donation from the William Randolph Hearst Foundations and produced through the Otis College Creative Action class Neighbor/Gap/Bridge.

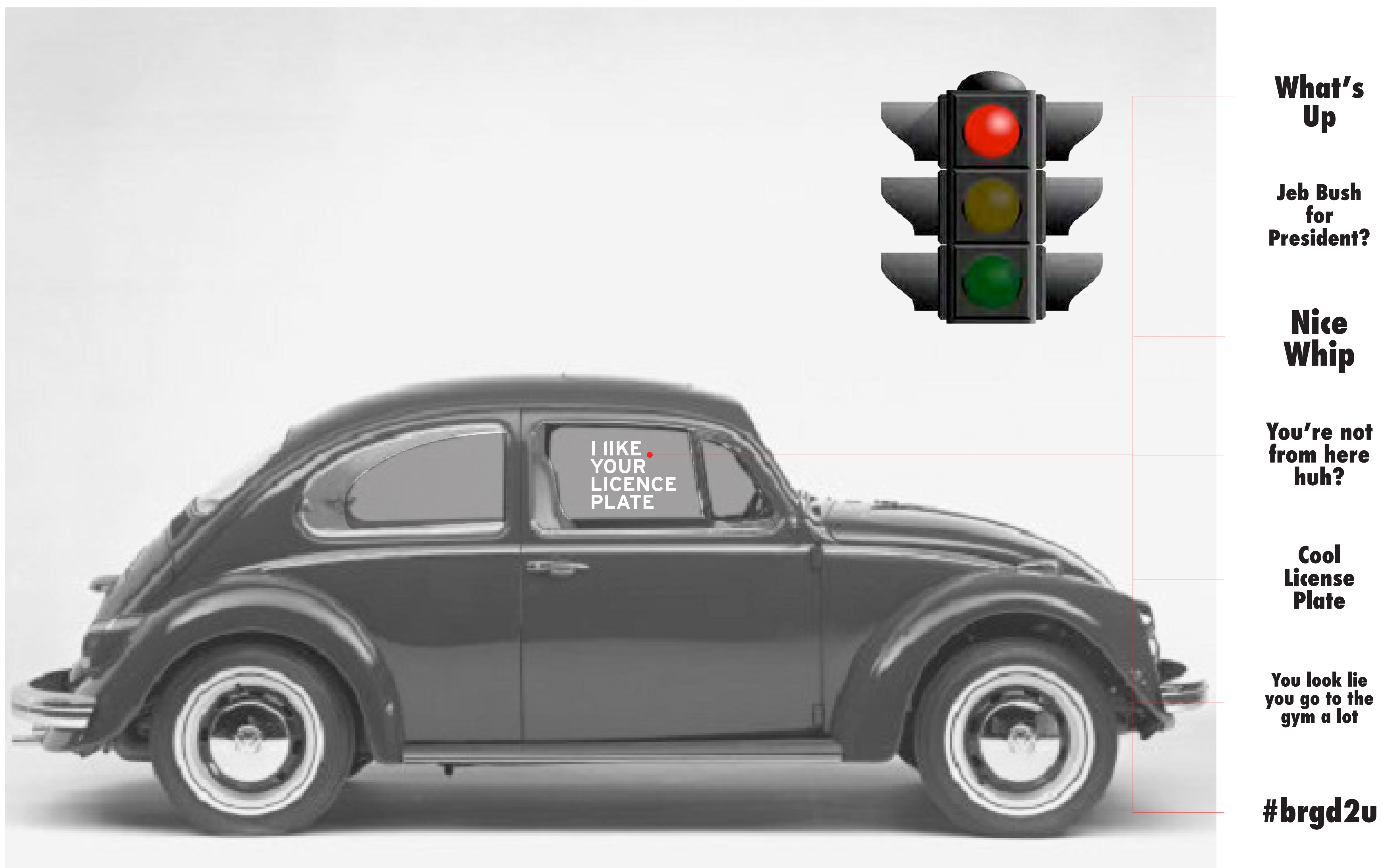


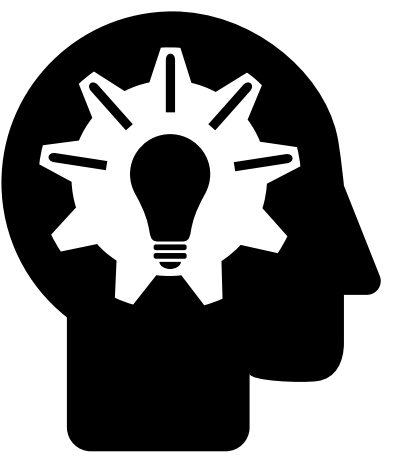
OTIS
Otis College of Art and Design

Play Idea # 10

Communi-Cards

Stoplight Chat Rooms Bring Us Together
When We Least Expect It

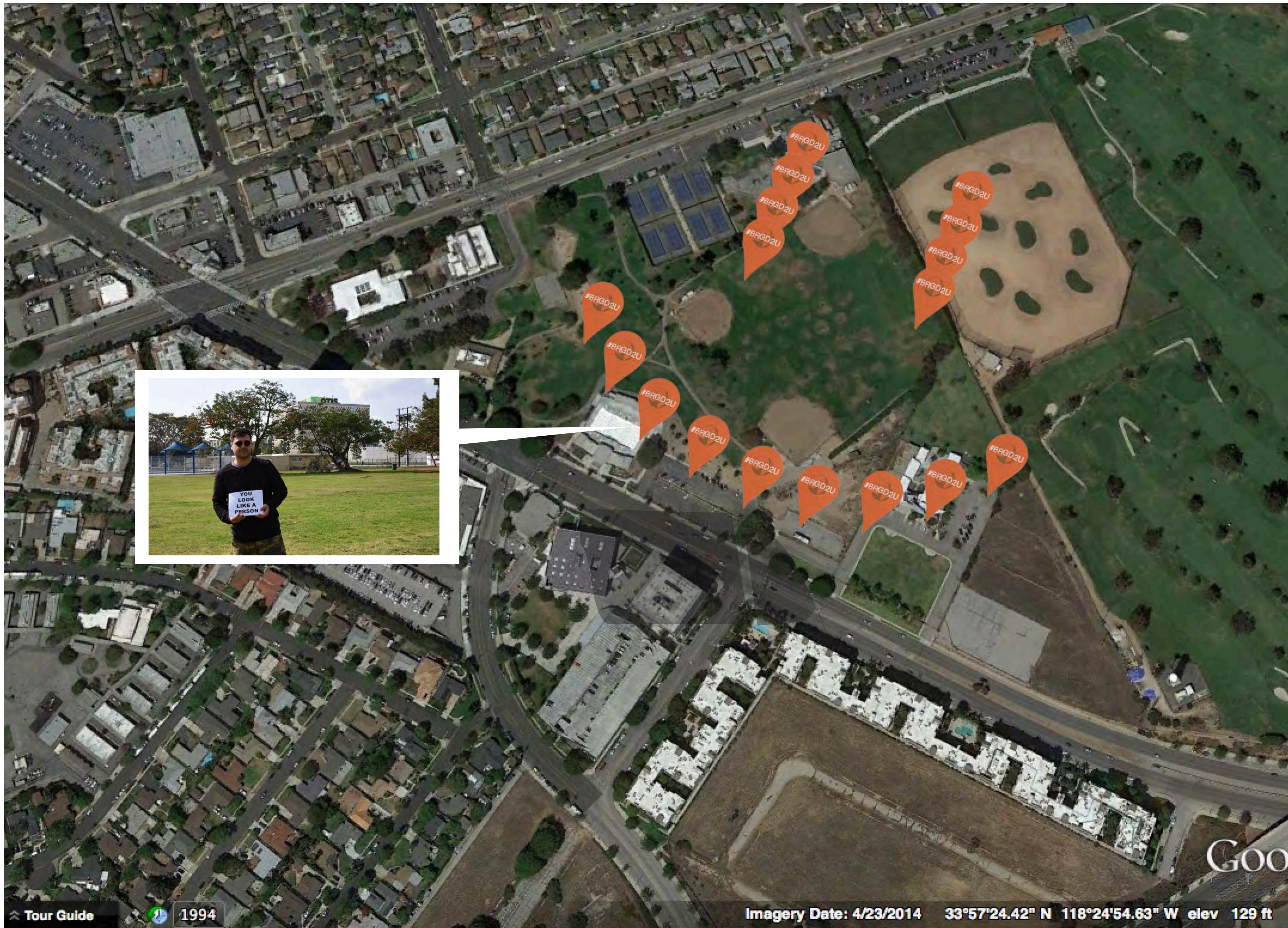


<p>COMMUNI-CARDS</p> <p>Joel Israel Gregory Toothacre</p>	<p>Communi-Cards invite communication during pauses in transit. Being in transit can make people feel isolated in the private environment of their vehicle. Communication between cars is rare. Humorous communication and connection is even more rare.</p> <p>This project re-defines public and private space between commuters + investigates the untapped potential to communicate on the road.</p>	<p>RE-PROGRAM OUR NEIGHBORHOOD FOR PLAY</p> <p>NEIGHBOR/ GAP/ BRIDGE</p> <p><small>This project was funded in part through a generous donation from the William Randolph Hearst Foundations and produced through the Otis College Creative Action class Neighbor/Gap/Bridge.</small></p>	 <p>OTIS <small>Otis College of Art and Design</small></p>
--	--	---	--

Play Idea # 9

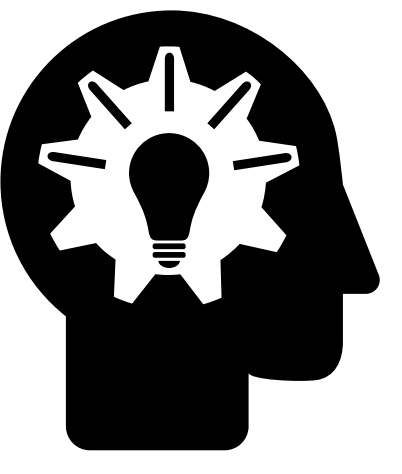
Geotag Tatoo

Discover Secret Messages Embedded Into Google Map That Make You Happy



33.9597° N,
118.3997° W



<p>GEOTAG TATOO</p> <p>Gregory Toothacre Joel Israel</p>	<p>Can Geotagging be the next drawing tool? Draw all over our neighborhood. Draw all over the (Google) earth. Mark your territory. Plant secret location specific images and videos, in your geotags for neighbors to discover.</p> <p>Tag. You're it.</p>	<p>RE-PROGRAM OUR NEIGHBORHOOD FOR PLAY</p> <p>NEIGHBOR/ GAP/ BRIDGE</p> <p><small>This project was funded in part through a generous donation from the William Randolph Hearst Foundations and produced through the Otis College Creative Action class Neighbor/Gap/Bridge.</small></p>	 <p>OTIS <small>Otis College of Art and Design</small></p>
---	--	---	--